

Multi-Voltage Relay "Encapsulated"

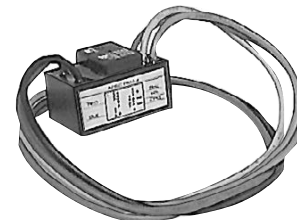
Specifications subject to change without notice. | USA 200204 | Page 1 of 1



PAM-4

DESCRIPTION

Multi-voltage encapsulated control relay provides 10 amps form C contacts. An input voltage of 9 VDC to 40 VDC will energize the relay coil. A status LED illuminates when the relay coil is energized. The encapsulated relay mounts by using the double-sided adhesive tape, self-tapping screw or loosely placed in a back box.



APPLICATION

The relays are suitable for remote field installation and applicable for control or status feedback in conjunction with HVAC temperature control, energy management, lighting, fire alarm and security systems

FEATURES

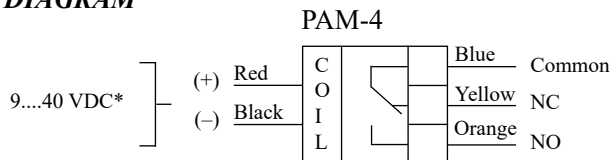
- Easy field installation
- Color-coded wire leads
- LED status indicator
- Multi-voltage
- SPDT, 10 A @ 115 VAC
- UL Listed



SPECIFICATIONS

Power requirement	15 mA
Coil voltage	9 VDC to 40 VDC
Contact	(1) SPDT, Form C
Contact rating	10 A @ 115 VAC 7 A @ 28 VDC 250 micro amps @ 5 VDC
Operating status LED display	Illuminates when coil energized
Permissible ambient humidity	5 to 95% RH, non-condensing
Permissible ambient temperature	-58°F to 185°F (-50°C to 85°C)
Unit	- Material: ABS
	- Color: Black
	- Dimensions: 1.0 x 1.5 x 0.9 in. (26 x 38 x 22 mm) W x H x D
	- Installation: Surface mount with supplied double-sided adhesive tape, or with mounting screw and (5) wire nuts
	- Wire connections: Color coded, 10 in. (254 mm) wire leads, 18 AWG (0.75 mm ²)
Ship weight	0.1 lb (0.05 kg)
Listing/approvals	UL Listed, CSA approved CSFM 7300-1004:10 MEA 73-92-E Vol 21
Warranty	Limited eighteen months
Part Number	PAM-4

WIRING DIAGRAM



Note: * The input is polarized. The unit will operate only if the proper voltage polarity is applied. Reverse voltage polarity will show a very high input resistance.

Relay contact position shown in the non-energized condition.