

Multi-Voltage Relay “Encapsulated”

Specifications subject to change without notice. | USA 200204 | Page 1 of 1



PAM-1

DESCRIPTION

Multi-voltage encapsulated control relay provides 10 amps form C contacts. The input voltage of 24 VDC, 24 VAC or 120 VAC can be selected for energizing the relay coil. A status LED illuminates when the relay coil is energized. The encapsulated relay mounts by using the double-sided adhesive tape, self-tapping screw or loosely placed in a back box.

APPLICATION

The relays are suitable for remote field installation and applicable for control or status feedback in conjunction with HVAC temperature control, energy management, lighting, fire alarm and security systems.

FEATURES

- Easy field installation
- Multi-voltage: 24 VDC/VAC, 120 VAC
- Color-coded wire leads
- SPDT, 10 A @ 120 VAC
- LED status indicator

SPECIFICATIONS

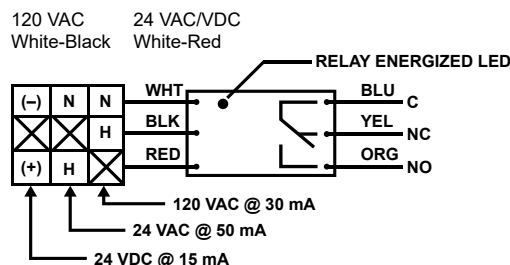
Operating voltage	
- 24 VDC	15 mA, polarity protected
- 24 VAC	50 mA
- 120 VAC	30 mA
Contact	(1) SPDT, dry form “C”
Contact rating	250 μ A @ 5 VDC; 7 A @ 24 VDC; 10 A @ 120 VAC
LED display	
- operating status	Illuminates “red” when energized
Permissible ambient	@ 100% RH, condensing
- temperature	32°F to 120°F (0°C to 49°C)
Physical, Unit	
- material	ABS
- construction	100% potted (sealed) with “flying” leads
- color	Black
- dimensions (W x H x D)	1.2 x 1.5 x 0.9 in. (25 x 38 x 20 mm)
Installation	Surface mount with supplied double-sided adhesive tape, or with mounting screw and (6) wire nuts
Wire connections	Color coded, 12 in. (305 mm) wire leads, 18 AWG (0.75 mm ²)
Weight	0.1 lb (0.05 kg)
Approvals/Listings	UL Listed, CSA approved CSFM 7300-1004:10 MEA 73-92-E Vol 21
Warranty	Limited eighteen months

Part Number PAM-1



WIRING CONFIGURATION

PAM-1



Relay contact position shown in the non-energized condition