

# Duct Mounting Kit for SC2 and AT6 Sensors

Specifications subject to change without notice. | DB\_C2-ZX\_E, Feb. 2018 | PRE 241203 | Page 1 of 2



## PG2-DUCTKIT

The duct mounting set consists of a sampling tube with hose and adapter for SC2 and AT6 sensors.

### APPLICATION

Duct mounting set for sampling from air ducts.



### FEATURES

- Easy to use
- Perfect coverage of the sensor head
- Double pipe can be cut to length for adaptation to the duct diameter

### SPECIFICATIONS

#### Sampling set

Gas sampling	Via sampling tube / connecting hose
Flow rate	Min. 3.1 mph (5000 m/h), max. 12.4 mph (20,000 m/h)
Air duct diameter	Min. 3.94 in. (0.1 m), max. 39.37 in. (1.0 m)
Length of sampling tube	9.84 in. (250 mm), adaptable to the duct diameter by cutting to length: 7.56 in. (192 mm), 5.24 in. (133 mm) or 3.03 in. (77 mm)*
Hose length	2 x 39.37 in. (1000 mm)
Assembly	- Arrow at the sampling set in flow direction - Always install in the center of the duct - Keep a minimum distance of at least 39.37 in. (1000 mm) to duct bends etc.

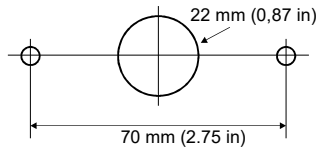
\* See drawing Sampling Tube

### ORDERING INFORMATION

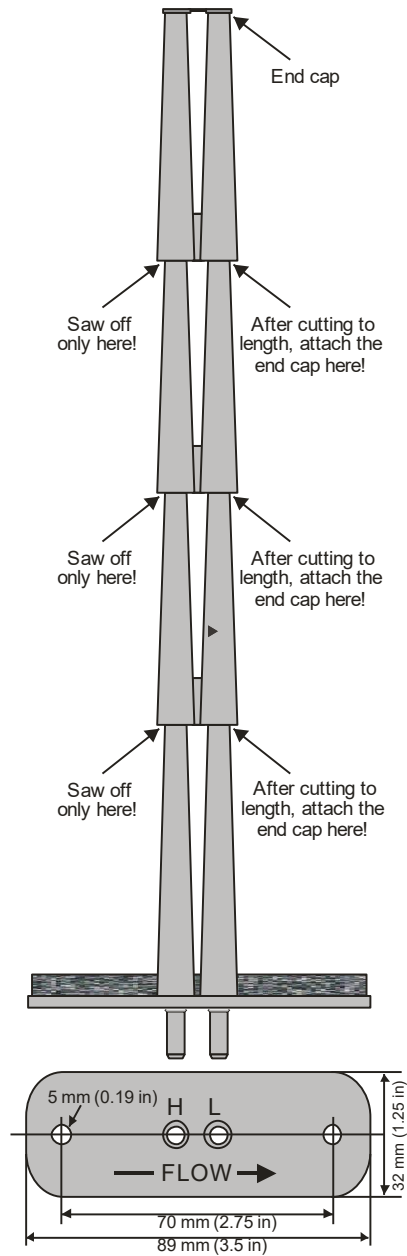
**PG2-DUCTKIT**      **(1) Duct Mounting Kit for SC2 / AT6 Sensor**

*Other application:*

- *The PG2-DUCTKIT enables connection of a refrigerant sensor to an air handler duct, possibly to monitor the internal refrigerant coil for leaks.*



Bore hole on the duct for sampling tube



Sampling tube