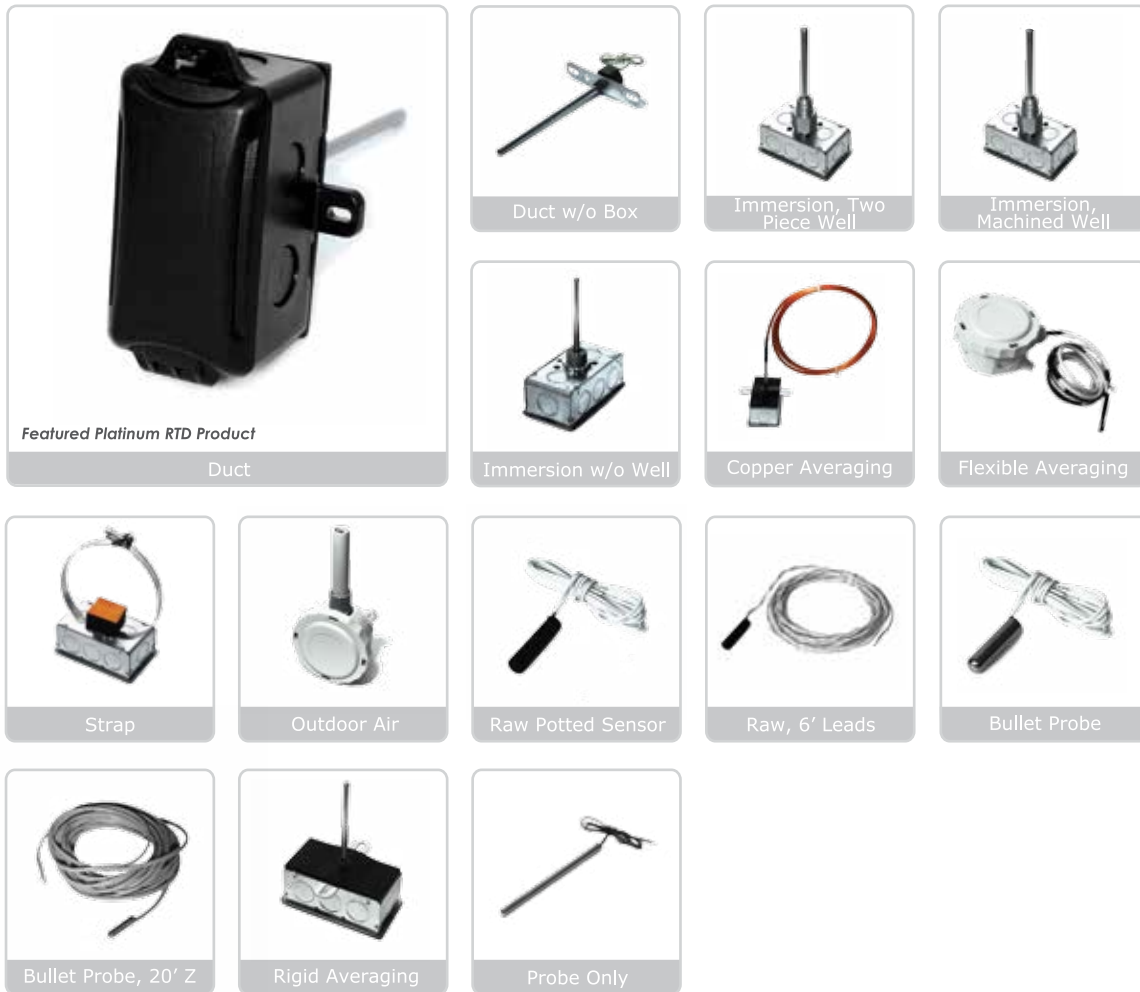


Platinum RTDs

I-100, I-1K



Platinum RTDs

General Mounting

A comprehensive selection of general mounting configurations for Platinum RTDs (see list above) is available. These sensors provide predictable and accurate output over the specified temperature range. Each sensor configuration is designed and manufactured for long-term quality and performance. Standard features such as double encapsulation and etched Teflon leads are incorporated where applicable.

Specifications

Accuracy	Single Point: +/-0.06% @ 32°F (0°C)	Operating Temp Range	Averaging: -50 to 275°F (-45.5 to 134.8°C)
Averaging	+/- 1.0 Ohm @ 32°F	Operating Humidity Range	0.00385 Ohm/Ohm/°C
Stability	+/-0.13°C (+/-0.23°F)	Temperature Coefficient	DIN-IEC-751
Repeatability	+/-0.36°F (+/- 0.2°C)	Standardization	Standard +/- 0.06% Class A
Operating Temp Range	Single Point: -58 to 392°F (-50 to 200°C)	Resistance Characteristics	Please reference pages 5, 6, 7 & 8

Ordering

Select one Series (A), one Configuration (B), one Length (C), one Enclosure (D) & one Lead Wire (E) (optional). **NOTE:** See Thermowell data sheet for proper well selection for all Immersion related sensors. Enclosure options (D) include Plastic Box (PB), Galvanized Box (GD), NEMA 3R (BB), NEMA 4X (4X), & Euro Housing (EH). The Plastic Box (PB) is rated from 0 to 203°F. Stay within the same row throughout the selection process for all General Mounting pages. ▶

A Sensor Series

- I-1K-2W** (1K Ohms, 2 wires)
 I-1K-3W (1K Ohms, 3 wires)
 I-100-2W (100 Ohms, 2 wires)
 I-100-3W (100 Ohms, 3 wires)

B Configuration

- D** (Duct) ▶
- DO** (Duct w/o Box) ▶
- PO** (Probe Only) ▶
- I** (Immersion, Two Piece Well) ▶
- IM** (Immersion, Machined Well) ▶
- INW** (Immersion w/o Well) ▶
- A** (Copper Averaging) ▶
- FA** (Flexible Cable Averaging) ▶
- RA** (Rigid Averaging) ▶
- S** (Strap) ▶
- O** (Outdoor Air) ▶
- W** (Raw Potted Sensor) ▶
- W-6'** (Raw w/6' Leads) ▶
- BP** (Bullet Probe) ▶
- BP-20'Zip** (BP, 20' of Zip Wire) ▶

C Length

- 4"** **6"** **8"** **12"** **18"** ▶
- 4"** **6"** **8"** **12"** **18"** ▶
- 4"** **6"** **8"** **12"** **18"** ▶
- 2.5"** **4"** **6"** ▶
- 2.5"** **4"** **6"** ▶
- 2.5"** **4"** **6"** **50'** **80'** **100'** ▶
- 8'** **12'** **24'** ▶
- 8'** **12'** **24'** ▶
- 18"** **24"** **36"** ▶
- (No Length) ▶
- (No Length) ▶
- (No Length) ▶
- (No Length) ▶
- (No Length) ▶
- (No Length) ▶
- (No Length) ▶

D Enclosure

- PB** **GD** **BB** **4X** **EH** ▶
- (No Enclosure) ▶
- (No Enclosure) ▶
- PB** **GD** **BB** **4X** **EH** ▶
- PB** **GD** **BB** **4X** **EH** ▶
- PB** **GD** **BB** **4X** **EH** ▶
- PB** **GD** **BB** **4X** **EH** ▶
- PB** **GD** **BB** **4X** **EH** ▶
- PB** **GD** ----- **4X** **EH** ▶
- ----- **BB** **4X** **EH** ▶
- (No Enclosure) ▶
- (No Enclosure) ▶
- (No Enclosure) ▶
- (No Enclosure) ▶
- (No Enclosure) ▶

E Lead Wire

- (N/A)
- 6'CL2P** **10'CL2P** **20'CL2P**
- 6'CL2P** **10'CL2P** **20'CL2P**
- (N/A)
- (N/A)
- (N/A)
- (N/A)
- (N/A)
- (N/A)
- (N/A)
- (N/A)
- (N/A)
- (N/A)
- 6'CL2P** **10'CL2P** **20'CL2P**
- (N/A)

Build your part number

After completing (A), (B), (C), (D) & (E) from the above table, fill in the Part Number Table below. An example part number is provided.

A	B	C	D	E
---	---	---	---	---

EXAMPLE: I-1K-2W - D - 4" - PB



CE exception: Averaging units and any other configuration with leads longer than 3 meters.

The Plastic Box has a UL94-HB rating. The NEMA 4X enclosure has a UL94-V2 flammability rating. The Euro Housing enclosure has a UL94-V0 flammability rating.